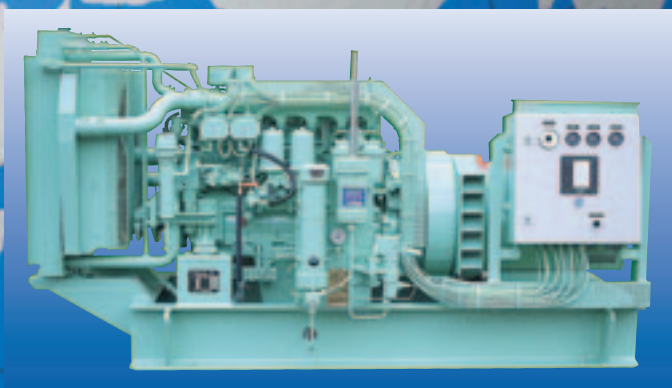
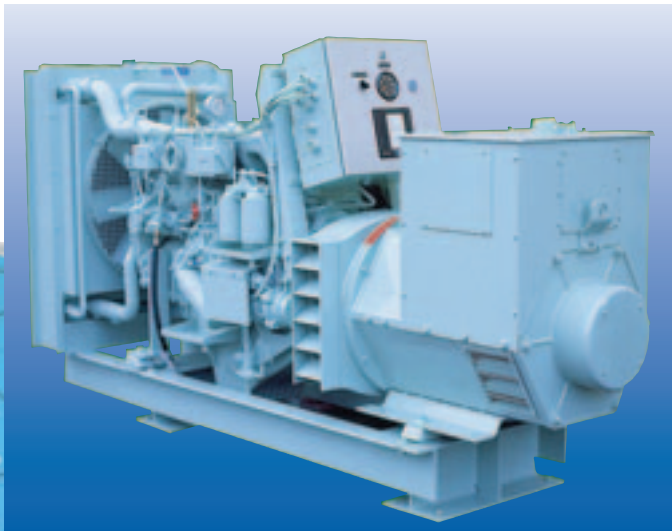


EMERGENCY/HARBOUR GENERATING SETS

**POWER
46-605 kW**



Engine and Alternator:

MAN 4-stroke high-speed marine diesel Engines and all well-known alternators (mainly NEWAGE/ STAMFORD).

Construction:

All sets are delivered on a foundation frame with flexible dampers between the engine/alternator and the frame. The sets are prepared for direct installation.

Cooling System:

The sets will be delivered with a fan cooled radiator cooler, mounted on the foundation frame and directly connected to the engine.

Starting System:

As standard, the sets are mounted with 24V electric starter. Alternatively, a compressed air starter is available. A second start source can be delivered, e.g. batteries, manual hydraulic starter or manual spring starter mounted on the engine.

Control System:

The sets are delivered with control systems, which include automatic start/stop, alarms etc. according to the customers' demands and the classification rules.

Quality, Economy:

The engines are characterized by:

- **Long lifetime, 20,000 hours before first overhaul**
- **Low maintenance costs**
- **Low noise level, approx. 95 dB**
- **Compactness and low weight, approx. 8 kg/kW**
- **Meet newest environmental standards**

All these advantages, together with the high quality, make a DEMP generating set a valuable, long-term investment.

RATING LIST

EMERGENCY/HARBOUR

Engine Type	kWe 50Hz	kWe 60Hz	Dimensions # L x W x H m/m	Weight # kg	Engine data
D0824-series LE201	46-83	45-102	2300x810x1300	1400	4-cyl in-line turbo charged and inter-cooled Bore/stroke: 108/125 mm Volume: 4,58 L
D0836-series LE201/203	90-202*	100-222*	2450x860x1450	1600	6-cyl in-line turbo charged and inter-cooled Bore/stroke: 108/125 mm Volume: 6,87 L
D2866-series E TE LXE LE201/203	90-104 108-171 180-250 246-296	105-122 125-200 177-276 286-330	2640x860x1560 2700x860x1560 2900x910x1600 3000x910x1600	1890 2000 2450 2600	6-cyl in-line E: natural aspirated TE: turbo charged LXE+LE201/203 turbo charged and inter-cooled Bore/stroke: 128/155 mm Volume: 11,967 L
D2876-series LE-201/203	296-378*	330-418*	3200x1050x1650	2900	6-cyl in-line turbo charged and inter-cooled Bore/stroke: 128/166 Volume: 12,8 L
D28-V engines 48LE201/203 40 40LE201/203 42LE 42LE201/203	296-381 294-325 392-457 332-390 420-534	304-402 304-368 470-496 360-441 515-605	3000x1375x1650 3370x1375x1650 3570x1375x1650 3600x1400x1700 3750x1400x1700	3200 3300 3500 3650 3925	8-10-12-cyl in v-90° all turbo charged and intercooled Bore/stroke: 128/142 mm Volume: 8-cyl 14,62 L 10-cyl 18,273 L 12-cyl 21,927 L

* Primo 2003 (D0836LE201/203 replaces D2866E+ TE, D2876LE201/203 replaces D2848LE201+ D2840LE)

Dimensions and weight are without hydraulic emergency starter. In case of mounting of this starter the length will be increased with approx. 120 m/m and the weight approx. 60 kg

Agent for:



Head Office: Skudehavnsvej 25, DK-2100 Copenhagen, Denmark
Tel +45 39 20 54 22, Fax +45 39 20 33 49
e-mail: demp@demp.com, homepage: www.demp.com

Demp's International Sales Organisation

DEMP is represented in the following countries:

Denmark	Portugal	Japan
Norway	Italy	Korea
Sweden	Croatia	Taiwan
Finland	Greece	P.R. China
France	Bulgaria	Singapore
UK	Romania	Australia
Germany	Russia	Indonesia
Poland	Tyrykey	Canada
Switzerland	Egypt	
Spain	Iran	