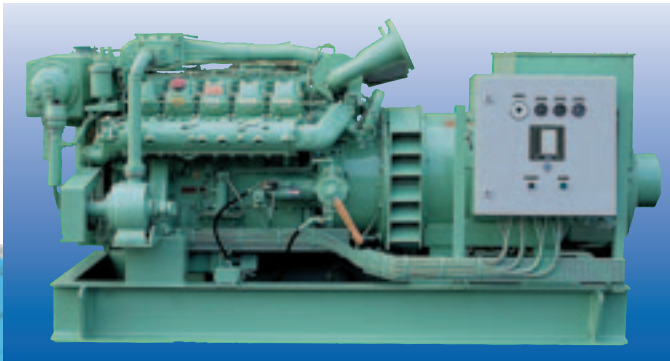


MAIN-AUXILIARY GENERATING SETS

**POWER
70-590 kW**



Engine and Alternator:

MAN 4-stroke high-speed marine diesel Engines and all well-known alternators (mainly NEWAGE/STAMFORD).

Construction:

All sets are delivered on a foundation frame with flexible dampers between the engine/alternator and the frame. The sets are prepared for direct installation.

Cooling System:

The sets are available with sea water/fresh water cooling incl. all pumps, all mounted on the set. Alternatively for connection to box coolers or the low temperature cooling water circuit of the main engines.

Starting System:

24V electric start or compressed air.

Control System:

The sets are delivered with control systems according to the customers' demands, i.e. manned or unmanned, alarms and shut-downs according to the classification rules.

Quality, Economy:

The engines are characterized by:

- **Low fuel oil consumption, approx. 190 g/kW**
- **Long lifetime, 20,000 operation hours before first overhaul**
- **Low maintenance costs**
- **Low noise level, approx. 95 dB**
- **Compactness and low weight, approx. 8 kg/kW**
- **Meet newest environmental standards**

All these advantages, together with the high quality, make a DEMP generating set a valuable, long-term investment.

RATING LIST

MAIN - AUXILIARY					
Engine Type	kWe 50Hz	kWe 60Hz	Dimensions L x W x H m/m	Weight kg	Engine data
D0836-series LE301	70-180**	100-203**	2400x800x1400	1700	6-cyl in-line turbo charged and Inter-cooled Bore/stroke: 108/125 mm Volume: 6,87 L
D2866-series E LXE30	70-105 125-226	88-120 160-261	2640x860x1560 2900x1300x1450	1890 2650	6-cyl in-line E: natural aspirated LXE30: turbo charged and inter-cooled Bore/stroke: 128/155 mm Volume: 11,967 L
D2876-series LE-301	240-322*	304-364*	3000x1400x1500	2800	6-cyl in-line turbo charged and inter-cooled Bore/stroke: 128/166 mm Volume: 12,8 L
D28-V engines 48LE 40LE 40LE301 42LE 42LE301	240-250 296-316 390-420 332-400 420-509	260-301 304-365 390-487 360-434 470-592	2700x1325x1330 2960x1425x1460 3100x1425x1460 3225x1425x1650 3375x1425x1650	2900 3600 3800 3900 4000	8-10-12-cyl in v-90° All turbo charged and inter-cooled Bore/stroke: 128/142 mm Volume: 8-cyl 14,62 L 10-cyl 18,273 L 12-cyl 21,927 L
* Medium 2003 (replaces D2848LE + D2840LE)					
** Medium 2003 (replaces D2866E)					

Agent for:



Head Office: Skudehavnsvej 25, DK-2100 Copenhagen, Denmark
Tel +45 39 20 54 22, Fax +45 39 20 33 49
e-mail: demp@demp.com, homepage: www.demp.com

Demp's International Sales Organisation

DEMP is represented in the following countries:

Denmark	Portugal	Japan
Norway	Italy	Korea
Sweden	Croatia	Taiwan
Finland	Greece	P.R. China
France	Bulgaria	Singapore
UK	Romania	Australia
Germany	Russia	Indonesia
Poland	Tyrykey	Canada
Switzerland	Egypt	
Spain	Iran	